

NOTE: Remove existing 77.5' timber bridge w/concrete deck & construct a 60' detour bridge approximately 35' downstream. Deck elevation 162.0. All surfaces shall be kept clear free. See Special Provisions 1008-1 and 1008-2, and Section 1006 of the Specifications.

GENERAL NOTES

Bench Mark - "N.I.S." 30" Pine 41' Lt. Sta. 374+57. Elev. 166.54.

For Details of Substructure see Drawing No. 5421A.

For Details of Superstructure see Drawing No. 5423.

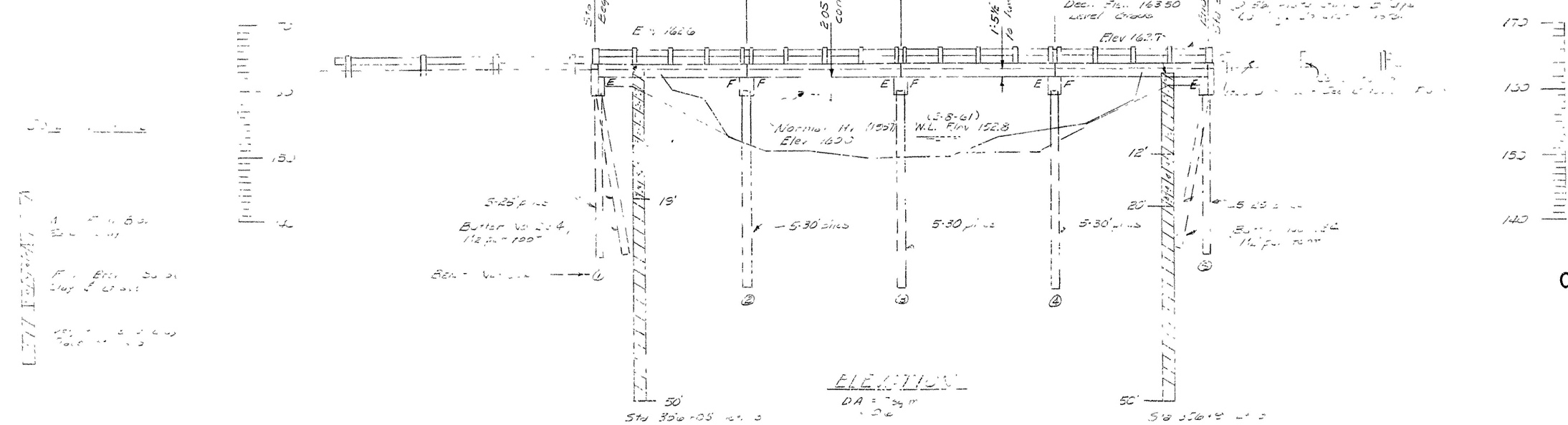
All concrete removed from the existing bridge shall be placed carefully by hand methods along the slopes at bridge ends as directed by the Engineer.

All piling shall be 16" octagonal precast concrete piles driven to a minimum bearing of 35 tons per pile. Lengths of piling shown are for estimating purposes only. Actual lengths are to be determined in the field. Drive one 35' test pile in Bent No. 2. All piling shall be driven to a minimum penetration of 20 feet.

Loading: H20-S16 AASHTO 1957

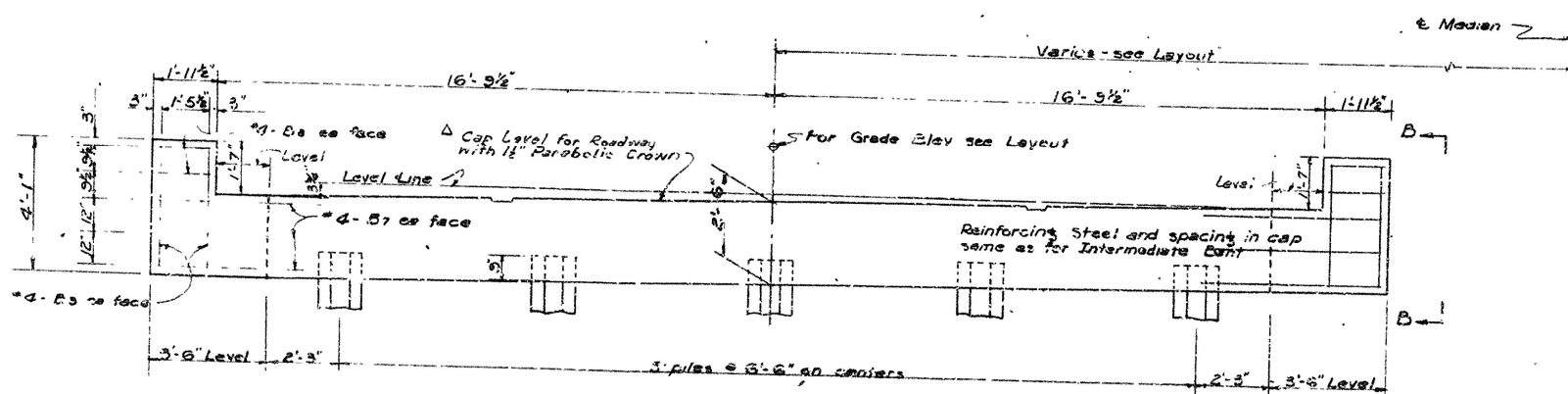
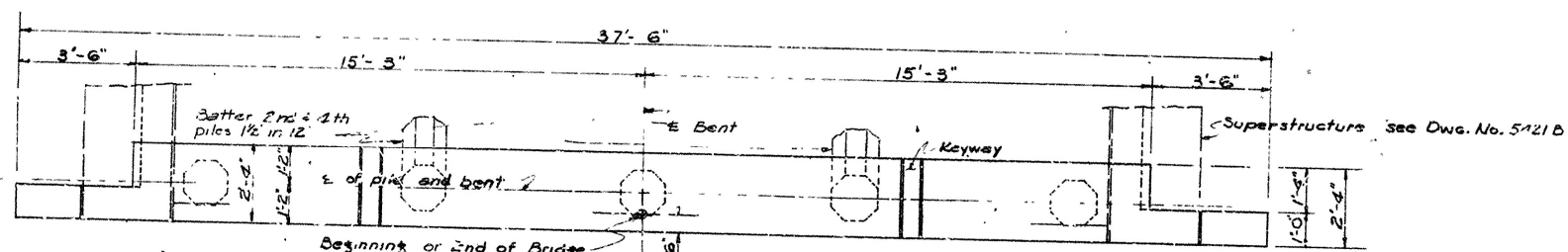
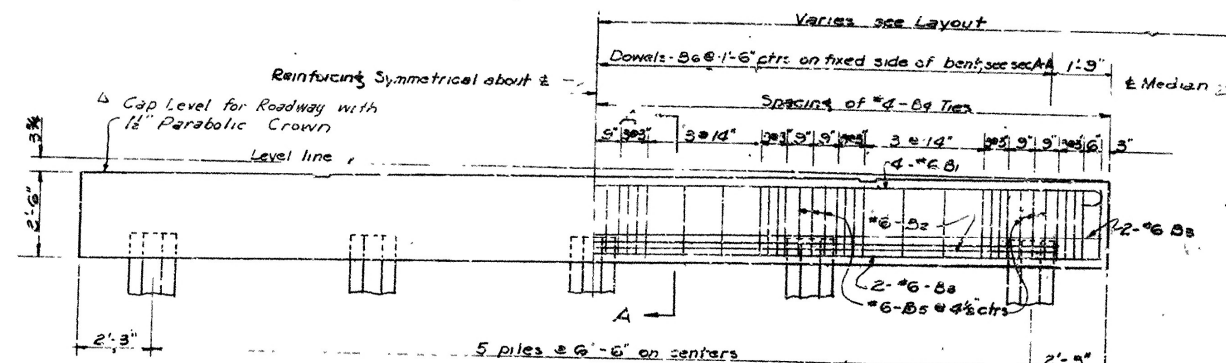
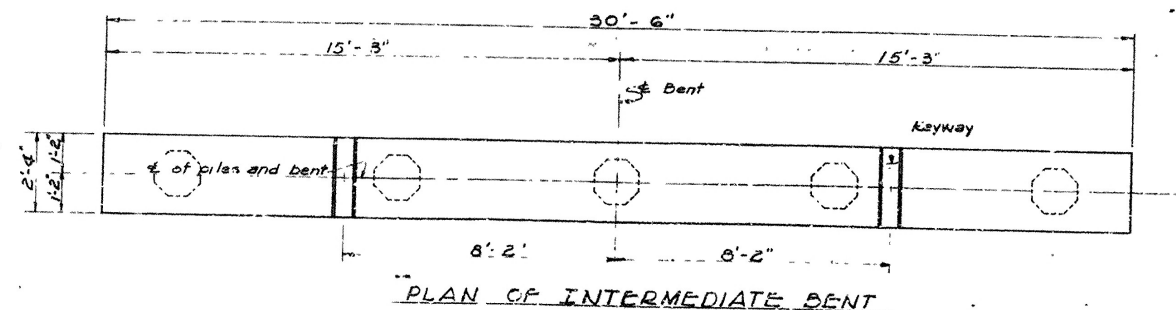
Stresses: Class S Concrete (n=10) 1,200 psi
Reinforcing Steel 20,000 psi

SPECIFICATIONS: Arkansas State Highway Commission Standard Specifications for Highway Construction, Edition of 1958.

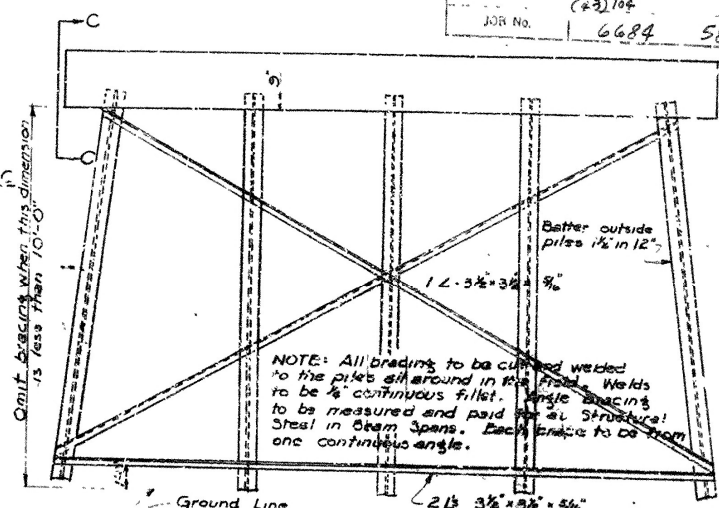
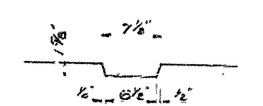
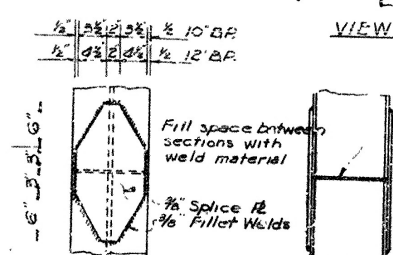
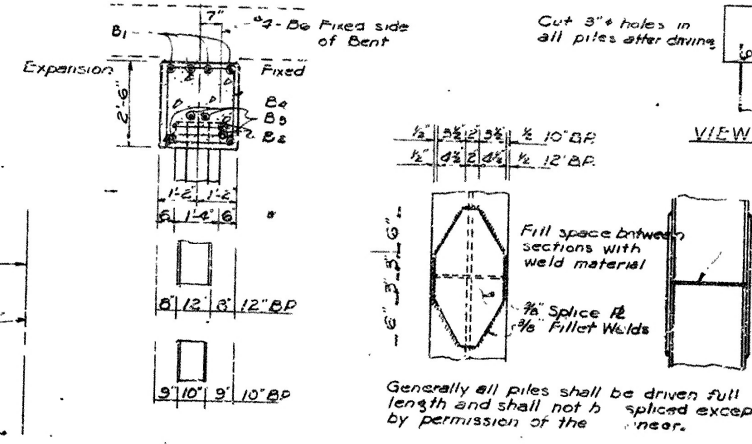


**LAYOUT OF BRIDGE
OVER SOUTH FORK FOUNTAIN CREEK
HAMBURG-DREW COUNTY LINE
ASHLEY COUNTY
ROUTE 81 SEC. 2
ARKANSAS STATE HIGHWAY COMMISSION
LITTLE ROCK, ARK.**

DRAWN BY: J.E. DATE: 8-7-61
TRACED BY: DATE: 8-7-61
CHECKED BY: DATE: 8-7-61
SCALE: 1"=20'
BRIDGE NO. 3552 DRAWING NO. 11598



NOTE: Reverse crown when the median is on the left.



GENERAL NOTES

BAR LIST PER BENT					BENDING DIAGRAM	
MARK	SIZE	NO. PER BENT		LENGTH		
		END	INT			
B1	#6	4	4	3'-6"	ST	
B2	#6	4	4	3'-6"		
B3	#6	4	4	3'-0"		
B4	#2	50	50	6'-11"	ST	
B5	#6	15	15	6'-8"		
B6	#4	-	-	2'-6"		
B7	#4	12	-	5'-0"		
B8	#4	8	-	1'-8"		
B9	#4	6	-	3'-9"	ST	

Dimensions are to centers of bars:

DETAILS OF
STANDARD PILE BENTS
FOR STD. 30'-0" R.C. SLAB SPANS

28'-0" CLEAR ROADWAY 2 CURBS @ 1'-6"

ROUTE	SEC
1	1
2	2
3	3
4	4
5	5
6	6
7	7
8	8
9	9
10	10
11	11
12	12
13	13
14	14
15	15
16	16
17	17
18	18
19	19
20	20
21	21
22	22
23	23
24	24
25	25
26	26
27	27
28	28
29	29
30	30
31	31
32	32
33	33
34	34
35	35
36	36
37	37
38	38
39	39
40	40
41	41
42	42
43	43
44	44
45	45
46	46
47	47
48	48
49	49
50	50
51	51
52	52
53	53
54	54
55	55
56	56
57	57
58	58
59	59
60	60
61	61
62	62
63	63
64	64
65	65
66	66
67	67
68	68
69	69
70	70
71	71
72	72
73	73
74	74
75	75
76	76
77	77
78	78
79	79
80	80
81	81
82	82
83	83
84	84
85	85
86	86
87	87
88	88
89	89
90	90
91	91
92	92
93	93
94	94
95	95
96	96
97	97
98	98
99	99
100	100

ARKANSAS STATE HIGHWAY COMMISSION
LITTLE ROCK, ARK.

DRAWN BY: ALB DATE: 7-16-57
 TRACED BY: _____ DATE: _____
 CHECKED BY: BM DATE: 6-14-59
 BRIDGE NO. _____
 DRAWING NO. 5421A
 SCALE: 3/8" = 1'-0"
Except as noted
 FILE 25 DWG NO 10023A

DRAWN BY: Aug DATE: 7-16-57

TRACED BY: DATE:

BRIDGE NO.

DRAWING NO. 5421A
File as DWG No 10023A

